




Software interface

There are several software interfaces available to monitor the status of the u.RECS system. These are the Management WebGUI and a REST API providing XML based monitoring and management functionality.

Management WebGUI

The Management WebGUI is established on every u.RECS unit. Accessible by any known browser on the assigned IP address and the default port 443. The following views are dependent on the device and assembly.

In general these symbols have the following meaning on every page:

	Everything is OK. Also indicated by a green line in a graph.
	Warnung. Something is wrong, but the system is still fully functional. The system has to be checked so the problem doesn't get worse. Indicated by a yellow line in a graph.
	Critical Error. The system must be checked immediately and maybe has to be shut down to prevent hardware damage. indicated by a red line in a graph.

Management

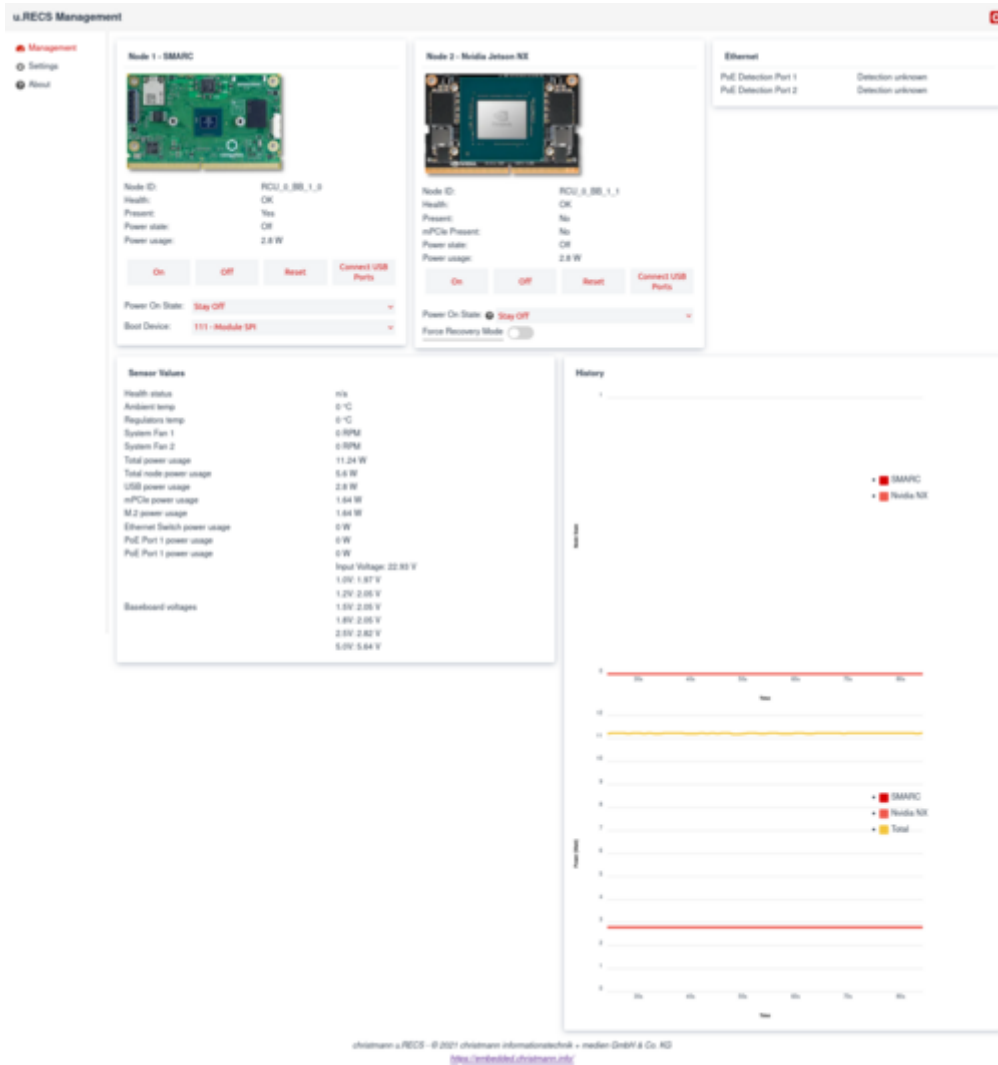


Fig. 1
Settings

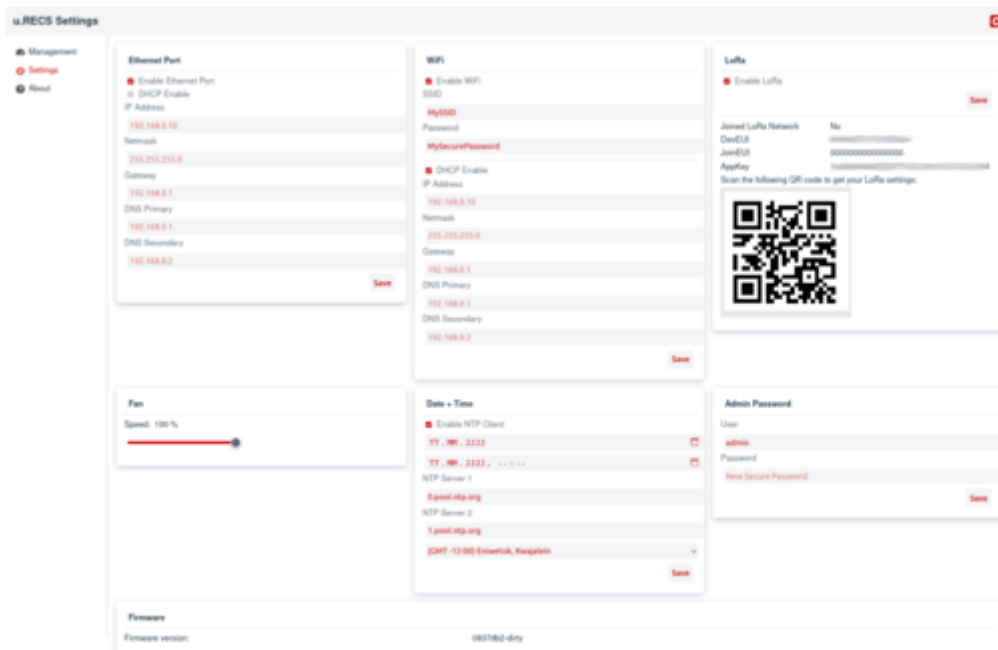


Fig. 1

REST API

Access

The u.RECS Management API is accessible via the IP-Address or the hostname of the u.RECS. The basic URL of the API has the format [https://\[ip-address\]/REST/\[system/baseboard/node\]](https://[ip-address]/REST/[system/baseboard/node]) with http or https, depending on your configuration. Therefore, please check the following URL as an example:

<https://192.168.0.50/REST/system>

Accessing the REST API requires HTTP Basic authentication. The password of the admin account can be changed in the Settings page.

Components

The u.RECS Management API makes all hardware components available as XML trees. The following components are supported by the API:

Attribute	Description
node	A single node
baseboard	Overview about the baseboard that can be equipped with 1 or 2 nodes
system	Overview of the whole system (baseboard + node)
lorawan	Enables communication to LoRaWAN application servers

Many resources also return lists of components. These are named according to the scheme <component name>List (e.g. nodeList) and contain the elements of the list.

Node

Example XML:

```
<nodeList>
  <node maxPowerUsage="26" baseboardPosition="0" architecture="unknown
(SMARC)" baseboardId="RCU_0_BB_1" voltage="5.64"
  actualNodePowerUsage="2.8" actualPowerUsage="2.8" state="0"
lastPowerState="0" defaultPowerState="0"
  rcuId="RCU_0" health="OK" lastSensorUpdate="1369" id="RCU_0_BB_1_0"
present="true" bootDevice="0"/>
  <node maxPowerUsage="27" baseboardPosition="1" architecture="ARM + iGPU"
baseboardId="RCU_0_BB_1" voltage="5.64"
  actualNodePowerUsage="2.8" actualPowerUsage="2.8" state="0"
lastPowerState="0" defaultPowerState="0"
  rcuId="RCU_0" health="OK" lastSensorUpdate="1369" id="RCU_0_BB_1_1"
present="false" mpciePresent="false" forceRecovery="false"/>
```

</nodeList>

The following table shows the possible attributes (some are optional) and their meaning:

Attribute	Description	Unit	Data type
id	Unique ID for referencing the component	-	String
rcuId	Unique ID for referencing the underlying RCU (for backwards compatibility to the RECS® Box series)	-	String
actualPowerUsage	Actual power consumption of a node (Node + PEG)	W	Double
actualNodePowerUsage	Actual power consumption of a node (Node only)	W	Double
maxPowerUsage	Maximum power the node can draw	W	Integer
baseboardId	ID of the baseboard which hosts the node	-	String
baseboardPosition	Position of the node on the baseboard	-	Integer
state	Actual power state of the node (0=Off, 1=On, 2=Soft-off, 3=Standby, 4=Hibernate)	-	Integer
lastPowerState	Last power state of the node which can be used to recover after a power failure (0=Off, 1=On, 2=Soft-off, 3=Standby, 4=Hibernate)	-	Integer
defaultPowerState	Defines the power-on-state in which the node should be after a power failure (0=Off, 1=On, 2=lastPowerState)	-	Integer
architecture	Architecture (x86, arm, UNKNOWN)	-	String
health	Health status of the node (OK, Warning, Critical)	-	String
voltage	Supply voltage of the baseboard	V	Double
lastSensorUpdate	Unix-style epoche timestamp of the last sensor update	s	Long
present	Node is plugged in and detected	-	Boolean
mpciePresent	mPCIe card is plugged in and detected	-	Boolean
forceRecovery	Force Recovery pin is pulled high (only for Nvidia Jetson)	-	Boolean

In accordance to the component node the API offers nodeList which returns multiple instances of node.

Baseboard

Example XML:

```
<baseboard serialNumber="90380CA9D524" rcuPosition="0"
baseboardType="u.RECS" id="RCU_0_BB_1" lastSensorUpdate="358"
  rcuId="RCU_0" inputVoltage="22.93" boardVoltage1V0="1.97"
boardVoltage1V2="2.05" boardVoltage1V5="2.05"
  boardVoltage1V8="2.05" boardVoltage2V5="2.82" boardVoltage5V0="5.64"
totalPowerUsage="11.24" usbPowerUsage="2.8"
  mPciePowerUsage="1.64" m2PowerUsage="1.64" ethSwitchPowerUsage="0"
poePowerUsagePort1="0" poePowerUsagePort2="0"
  regulatorsTemperature="0" ambientTemperature="0" fanSpeed="100"
systemFan1Rpm="0" systemFan2Rpm="0" loraJoined="false"
  loraJoinEui="0000000000000000" loraDevEui="1234561234561234"
```

```

loraAppKey="01234567890123456789012345678901"
  loraVendorID="FFFF" loraVendorProfileID="0001" loraRssi="16"
poeDetectionStatusPort1="0" poeDetectionStatusPort2="0"
  firmwareVersion="0837db2">
  <nodeId>RCU_0_BB_1_0</nodeId>
  <nodeId>RCU_0_BB_1_1</nodeId>
</baseboard>

```

The attributes have the following meaning:

Attribute	Description	Unit	Data type
id	Unique ID for referencing the component	-	String
inputVoltage	Voltage of the input power	Volt	Double
boardVoltage1V0	Voltage of the internal 1.0V power rail	V	Double
boardVoltage1V2	Voltage of the internal 1.2V power rail	V	Double
boardVoltage1V5	Voltage of the internal 1.5V power rail	V	Double
boardVoltage1V8	Voltage of the internal 1.8V power rail	V	Double
boardVoltage2V5	Voltage of the internal 2.5V power rail	V	Double
boardVoltage5V0	Voltage of the internal 5.0V power rail	V	Double
totalPowerUsage	Total power usage of the whole u.RECS, measured at the power plug	W	Double
usbPowerUsage	Power usage of the whole USB hub and external USB ports	W	Double
mPciePowerUsage	Power usage of the mPCIe card	W	Double
m2PowerUsage	Power usage of the top M.2 card	W	Double
ethSwitchPowerUsage	Power usage of the Ethernet switch	W	Double
poePowerUsagePort1	PoE power output at Eth Port 1	W	Double
poePowerUsagePort2	PoE power output at Eth Port 2	W	Double
regulatorsTemperature	Temperature of the main power regulators	°C	Integer
ambientTemperature	Ambient temperature	°C	Integer
fanSpeed	Set fan speed (0-100)	-	%
systemFan1Rpm	Rotational speed of system fan 1	RPM	Integer
systemFan2Rpm	Rotational speed of system fan 1	RPM	Integer
loraJoined	u.RECS successfully joined/connected to the TTN, which needs to be done after every reboot	-	Boolean
loraJoinEui	u.RECS LoRa Join EUI, always 0 for now	-	Integer
loraDevEui	u.RECS specific LoRa Dev EUI	-	Integer
loraAppKey	u.RECS specific, random generated LoRa App Key	-	Integer
loraVendorID	christmann specific LoRa vendor ID, FFFF for now	-	Hex
loraVendorProfileID	christmann u.RECS LoRa vendor profile ID, always 0001	-	Hex
loraRssi	Measured signal strength of the last received message (incl. join responses)	dBm	Integer
poeDetectionStatusPort1	Raw status of the PoE detection status of Eth Port 1, please see PoE status decoder on how to decode the status	-	Integer
poeDetectionStatusPort2	Raw status of the PoE detection status of Eth Port 2, please see PoE status decoder on how to decode the status	-	Integer

Attribute	Description	Unit	Data type
firmwareVersion	Actual running firmware version	-	Hex

System

The output of the /REST/system API call returns a combined output of /REST/node and /REST/baseboard, which eases the monitoring of the whole system with one call.

Example XML:

```
<system>
  <baseboard serialNumber="90380CA9D524" rcuPosition="0"
baseboardType="u.RECS" id="RCU_0_BB_1" lastSensorUpdate="1403"
  rcuId="RCU_0" inputVoltage="22.93" boardVoltage1V0="1.97"
boardVoltage1V2="2.05" boardVoltage1V5="2.05"
  boardVoltage1V8="2.05" boardVoltage2V5="2.82" boardVoltage5V0="5.64"
totalPowerUsage="11.24" usbPowerUsage="2.8"
  mPciePowerUsage="1.64" m2PowerUsage="1.64" ethSwitchPowerUsage="0"
poePowerUsagePort1="0" poePowerUsagePort2="0"
  regulatorsTemperature="0" ambientTemperature="0" fanSpeed="100"
systemFan1Rpm="0" systemFan2Rpm="0" loraJoined="false"
  loraJoinEui="0000000000000000" loraDevEui="1234561234561234"
loraAppKey="01234567890123456789012345678901"
  loraVendorID="FFFF" loraVendorProfileID="0001"
poeDetectionStatusPort1="0" poeDetectionStatusPort2="0"
  firmwareVersion="0837db2-dirty">
  <nodeId>RCU_0_BB_1_0</nodeId>
  <nodeId>RCU_0_BB_1_1</nodeId>
</baseboard>
<nodeList>
  <node maxPowerUsage="26" baseboardPosition="0" architecture="unknown
(SMARC)" baseboardId="RCU_0_BB_1" voltage="5.64"
  actualNodePowerUsage="2.8" actualPowerUsage="2.8" state="0"
lastPowerState="0" defaultPowerState="0" rcuId="RCU_0"
  health="OK" lastSensorUpdate="1403" id="RCU_0_BB_1_0" present="true"
bootDevice="0"/>
  <node maxPowerUsage="27" baseboardPosition="1" architecture="ARM + iGPU"
baseboardId="RCU_0_BB_1" voltage="5.64"
  actualNodePowerUsage="2.8" actualPowerUsage="2.8" state="0"
lastPowerState="0" defaultPowerState="0" rcuId="RCU_0"
  health="OK" lastSensorUpdate="1403" id="RCU_0_BB_1_1" present="false"
mpciePresent="false" forceRecovery="false"/>
</nodeList>
</system>
```

Resources

The resources are split into monitoring resources (for pure information gathering) and management resources (for changing the system configuration or state).

Monitoring

For monitoring the following resources are available:

Attribute	Description	HTTP Method
/node	Returns a nodeList with all nodes of the system	GET
/baseboard	Returns an overview of the baseboard including the installed nodes	GET
/system	Returns an overview of the baseboard and all nodes. It includes all information of /baseboard and /node which makes it easy to get the whole system status with one REST call.	GET

Management

The management of individual components can be found under the “manage” path of the component.

Attribute	Description	HTTP method	Parameter
/node/{node_id}/manage/power_on	Turns on the node with the given ID and returns updated node XML	POST	
/node/{node_id}/manage/power_off	Turns off the node with the given ID and returns updated node XML	POST	
/node/{node_id}/manage/reset	Resets the node with the given ID and returns updated node XML	POST	
/node/{node_id}/manage/select_kvm	Switches the KVM port of the RECS® Box Computing Unit containing the node to the node with the given ID and returns updated node XML	PUT	
/rcu/{rcu_id}/manage/set_fans	Sets the overall fan speed of the RCU with the given ID and returns the current status of the RCU	PUT	percent={value}

LoRaWAN API

The LoRaWAN interface allows up and downlink connections to an application server. Payload can be scheduled and collected by interfacing the Management REST API.

Attribute	Description	HTTP method
-----------	-------------	-------------

Attribute	Description	HTTP method
/lorawan/uplink	Schedules uplink packet to the application endpoint defined in the management interface	POST
/lorawan/downlink/{fport}	Responds with incoming downlink LoRaWAN messages for the specified fport	GET

Example HTTP Body on GET request:

```
<lorawan fport="...">  
  <payload>{custom lorawan payload}</payload>  
  <time>{timestamp}</time>  
</lorawan>
```

Example HTTP Body on POST request:

```
<lorawan fport="...">  
  <payload>{custom lorawan payload}</payload>  
</lorawan>
```

FPort

The Frame Port (fport) separates different communication parties on the API, and functions as an identifier for the message sender / receiver. When using the REST API, you are free to choose a value between 2 - 223. FPort 1 is reserved for the management controller.

Errors

Information about the success or failure of management requests are returned via HTTP status codes. Please have a look at [RFC2616](#) for an overview about the defined HTTP status codes.

LoRa Message

The u.RECS supports upstream and downstream LoRa messages to [The Things Network \(TTN\)](#). The following table gives the LoRa message meaning of version 0.

All system related management communication (excluding the REST API) uses **FPort 1**.

Upstream message payload layout:

Byte(s)	Description	Unit	Data type
0	u.RECS Lora Message-Version	-	Byte
1	Node Info Smarc/Jetson, Bits: present_smarc / present_jetson / on_smarc / on_jetson	-	2 x 2 Bits
2	Regulators temperature:	°C	Byte (-127..+127)

Byte(s)	Description	Unit	Data type
3	Ambient temperature:	°C	Byte (-127..+127)
4-5	System fan 1:	RPM	Unsigned Short (0..65535)
6-7	System fan 2:	RPM	Unsigned Short (0..65535)
8-9	Smarc Power Usage:	mW	Unsigned Short (0..65535)
10-11	Jetson Power Usage:	mW	Unsigned Short (0..65535)
12-13	u.RECS Power Usage:	mW	Unsigned Short (0..65535)
14-15	USB Power Usage:	mW	Unsigned Short (0..65535)
16-17	mPCIe Power Usage:	mW	Unsigned Short (0..65535)
18-19	M.2 Power Usage:	mW	Unsigned Short (0..65535)
20-21	Ethernet Switch Power Usage:	mW	Unsigned Short (0..65535)
22-23	PoE Eth Port 1 Power Usage:	mW	Unsigned Short (0..65535)
24-25	PoE Eth Port 2 Power Usage:	mW	Unsigned Short (0..65535)
26	PoE Status Port 1	- (see below)	Byte
27	PoE Status Port 2	- (see below)	Byte

The u.RECS supports basic control functions over LoRaWAN. Downstream message payloads:

Change power state for node:

Byte(s)	Description	Unit	Data type
0	Lora Message-Version	-	Byte
1	RCU ID	-	Byte
2	Baseboard ID	-	Byte
3	Node ID	-	Byte
4	Power State (0=Off, 1=On, 2=Soft-off, 3=Standby, 4=Hibernate)	-	3 Bits

PoE status decoder

Here is some C-Code to decode the PoE Status:

```
PoE Status Bytes:
switch (status & 0xF) {
  case 0: ret = "Detection unknown"; break;
  case 1: ret = "Short circuit"; break;
  case 2: ret = "Capacitive"; break;
  case 3: ret = "RLOW"; break;
  case 4: ret = "RGOOD"; break;
  case 5: ret = "RHIGH"; break;
  case 6: ret = "Open circuit"; break;
  case 7: ret = "PSE to PSE"; break;
  case 15: ret = "MOSFET fault"; break;
}

if ((status & 0xF) == 4) { // RGOOD
  switch ((status >> 4) & 0xF) {
    case 0: ret += ", class unknown"; break;
    case 1: ret += ", class 1"; break;
    case 2: ret += ", class 2"; break;
  }
}
```

```
case 3: ret += ", class 3"; break;
case 4: ret += ", class 4"; break;
case 6: ret += ", class 0"; break;
case 7: ret += ", overcurrent"; break;
case 8: ret += ", class 5 4P single signature"; break;
case 12: ret += ", class 4 type 1 limited"; break;
case 13: ret += ", class 5 legacy"; break;
case 15: ret += ", class mismatch"; break;
}
```

From:
<https://recswiki.christmann.info/wiki/> - RECS®|Box Wiki

Permanent link:
https://recswiki.christmann.info/wiki/doku.php?id=doc_urecs:software_interface&rev=1701683916

Last update: 2023/12/04 09:58

